

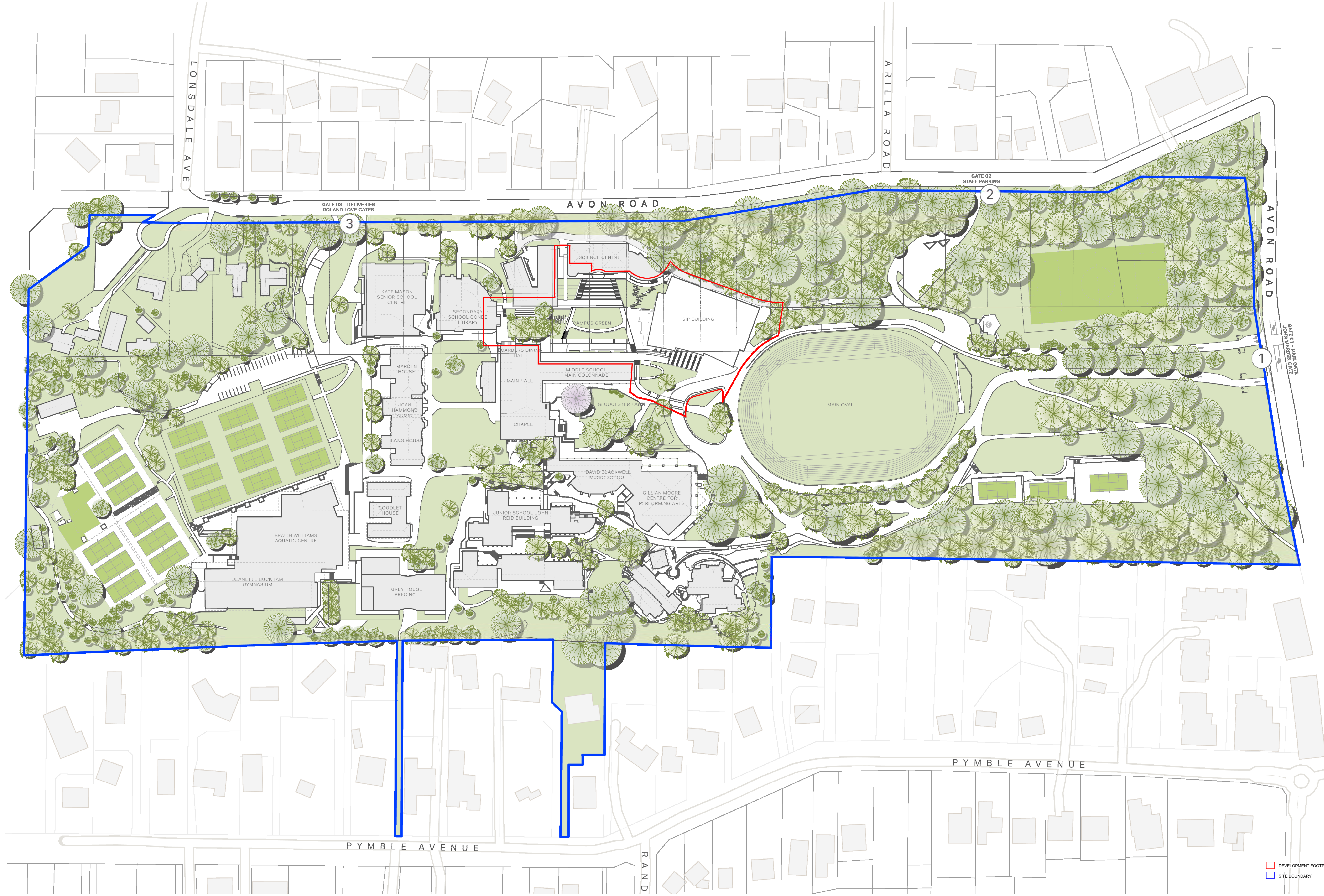
Pymble Ladies' College

Secondary Innovation Precinct



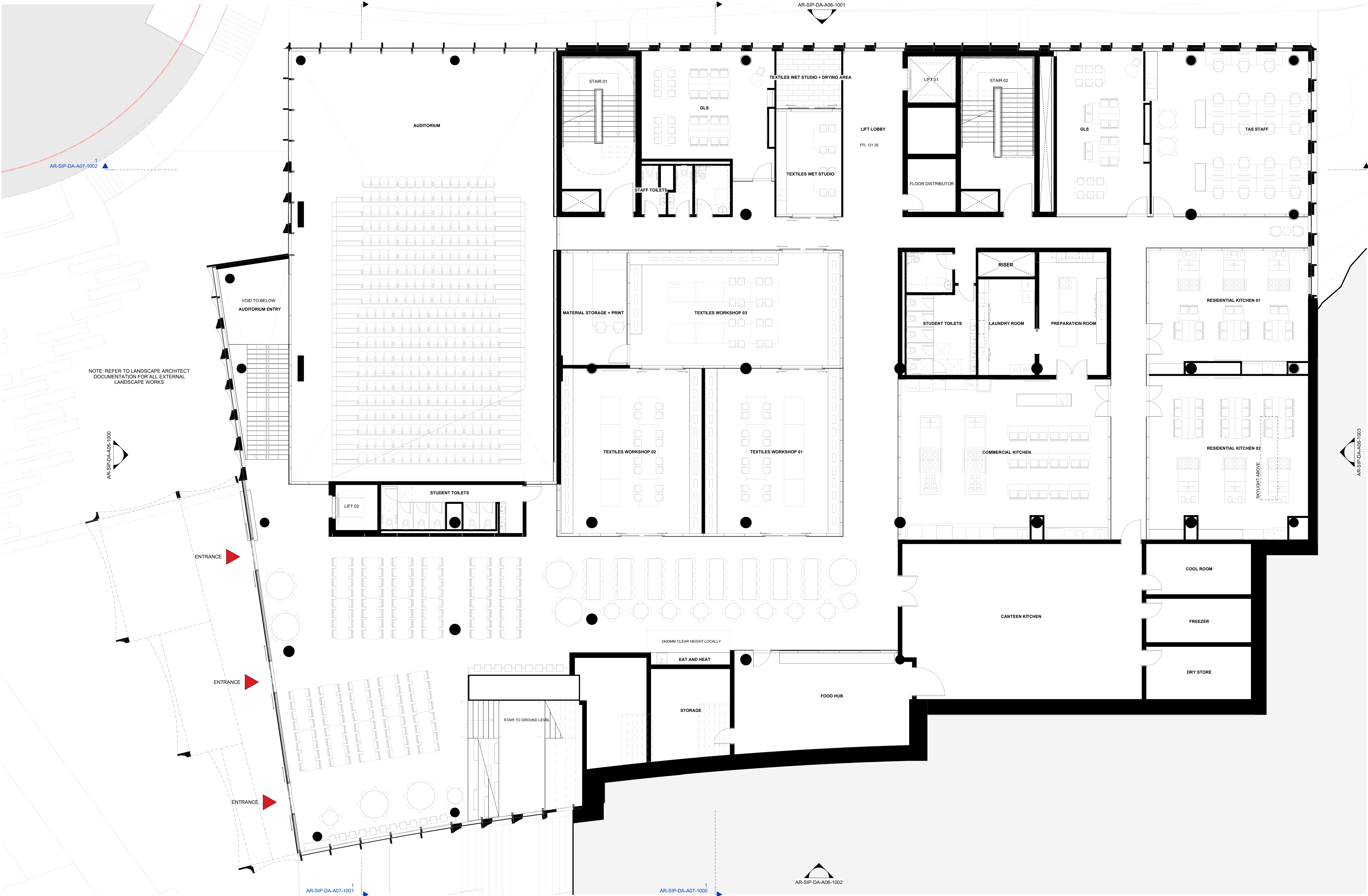
3XN GXN

3XN Architects — Drawings
9th February 2024



DEVELOPMENT FOOTPRINT
SITE BOUNDARY







3XN

3XN AUSTRALIA PTY LTD
SUITE 1, 276 DICKSON STREET
BURRILL HILLS NSW 2150
AUSTRALIA
ABN 40 610 400 530
+61 2 9071 3000
WWW.3XN.COM

NEW ARCHITECTS
REGISTRATION BOARD /
NOMINATED ARCHITECTS
KIM HERFORTH NIELSEN - 9513
FRED HOLZ - 12704
DANIEL CRUDDACE - 11438

INTELLECTUAL PROPERTY
COPYRIGHT 3XN AUSTRALIA PTY LTD. UNLESS OTHERWISE AGREED IN WRITING,
ALL RIGHTS TO THIS DOCUMENT ARE SUBJECT TO PAYMENT IN FULL OF ALL 3XN
AUSTRALIA PTY LTD. CHARGES. THIS DOCUMENT MAY ONLY BE USED FOR THE
EXPRESS PURPOSE AND PROJECT FOR WHICH IT HAS BEEN CREATED AND
DELIVERED. AS NOTIFIED IN WRITING BY 3XN AUSTRALIA PTY LTD. AND THIS
DOCUMENT MAY NOT BE OTHERWISE USED, OR COPIED, ANY UNAUTHORIZED
USE OF THIS DOCUMENT IS AT THE USER'S SOLE RISK AND WITHOUT LIMITING 3XN
AUSTRALIA PTY LTD'S RIGHTS THE USER RELEASES AND INDEMNIFIES 3XN
AUSTRALIA PTY LTD FROM AND AGAINST ALL LOSS SO ARISING.

GENERAL NOTES
DRAWINGS SHOW ARCHITECTURAL DESIGN INTENT ONLY.
THE DESIGN IS TO BE DEVELOPED IN COORDINATION WITH
THE CONTRACTOR AND THE SUBCONTRACTOR'S INPUT TO
ACHIEVE AND RETAIN THE DESIGN INTENT. ALL DRAWINGS
MUST BE READ IN CONJUNCTION WITH THE REPORTS,
SPECIFICATIONS AND SCHEDULES OF THE PROJECT TEAM.
THE DESIGN IS TO BE VERIFIED IN ACCORDANCE WITH THE
PROJECT PERFORMANCE REQUIREMENTS FOR THE
PROJECT TEAM SPECIFICATIONS.

SHOP-DRAWING DETAILING MATERIAL / EQUIPMENT
SELECTION AND SITE INVESTIGATION OF EXISTING
STRUCTURES TO BE COORDINATED WITH THE
CONTRACTOR AND SUBCONTRACTORS. ALL DIMENSIONS
OF WORK, PRIOR TO OR CONCURRENTLY TO THE
DEVELOPMENT OF SHOP-DRAWINGS. ALL DISCREPANCIES
THAT MAY BE IDENTIFIED ARE TO BE REPORTED TO THE
ARCHITECT AND HEAD CONTRACTOR FOR REVIEW.

REVISION		
ISSUE	DATE	DESCRIPTION
1	03/02/2025	DRAFT SSD-D
2	17/02/2025	FOR SSD-DA
3	13/03/2025	FOR SSD-DA

NOTES

FOR INFORMATION

DRAWING NOT TO BE USED FOR CONSTRUCTION

DRAWING TO BE PRINTED IN COLOUR

DRAWING KEY

CLIENT



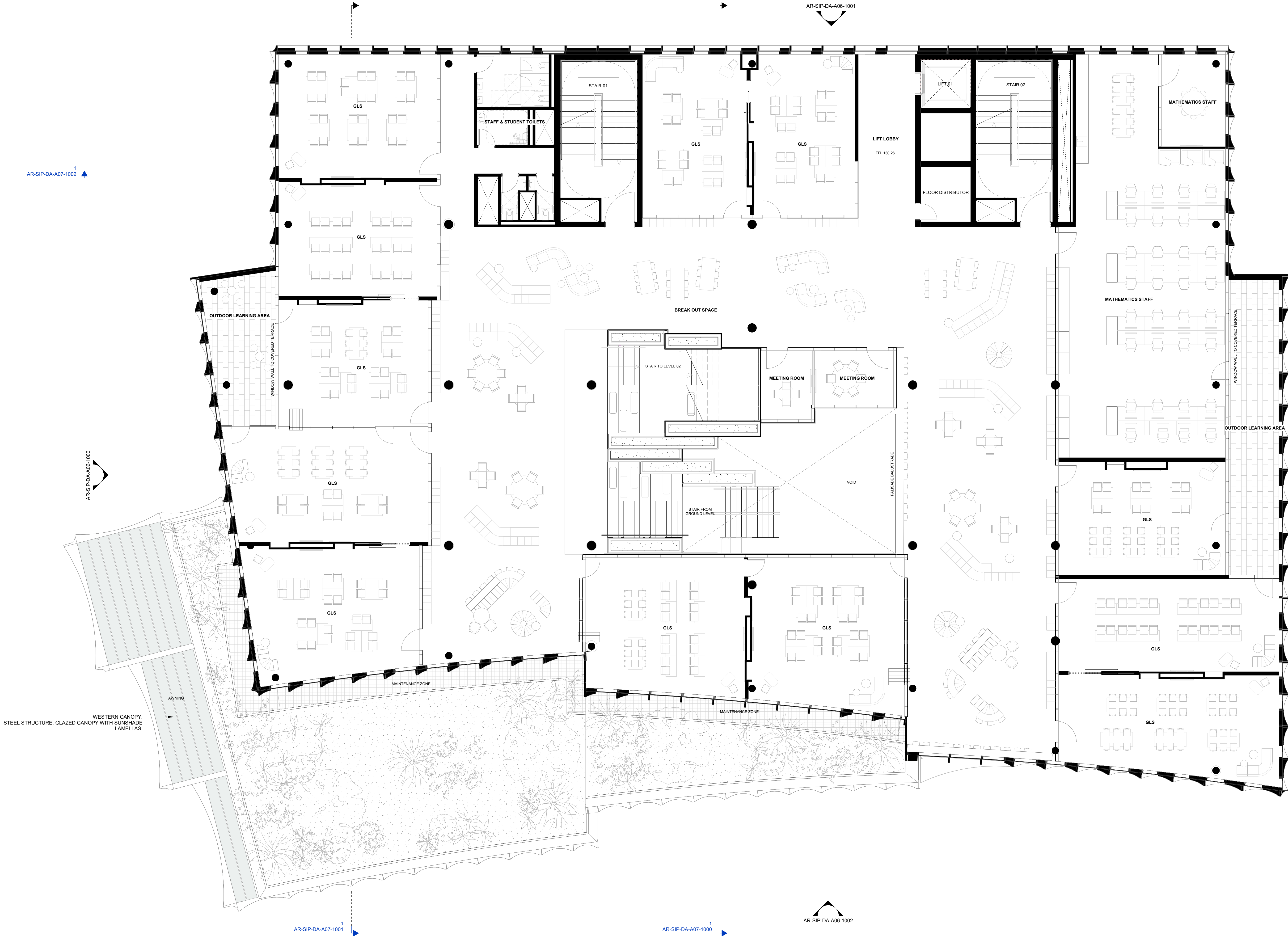
PROJECT NAME
PYMBLE LADIES' COLLEGE - SECONDARY INNOVATION PRECINCT
PROJECT ADDRESS
20 AVON ROAD, PYMBLE NSW 2073 AUSTRALIA
3XN PROJECT NUMBER
550053

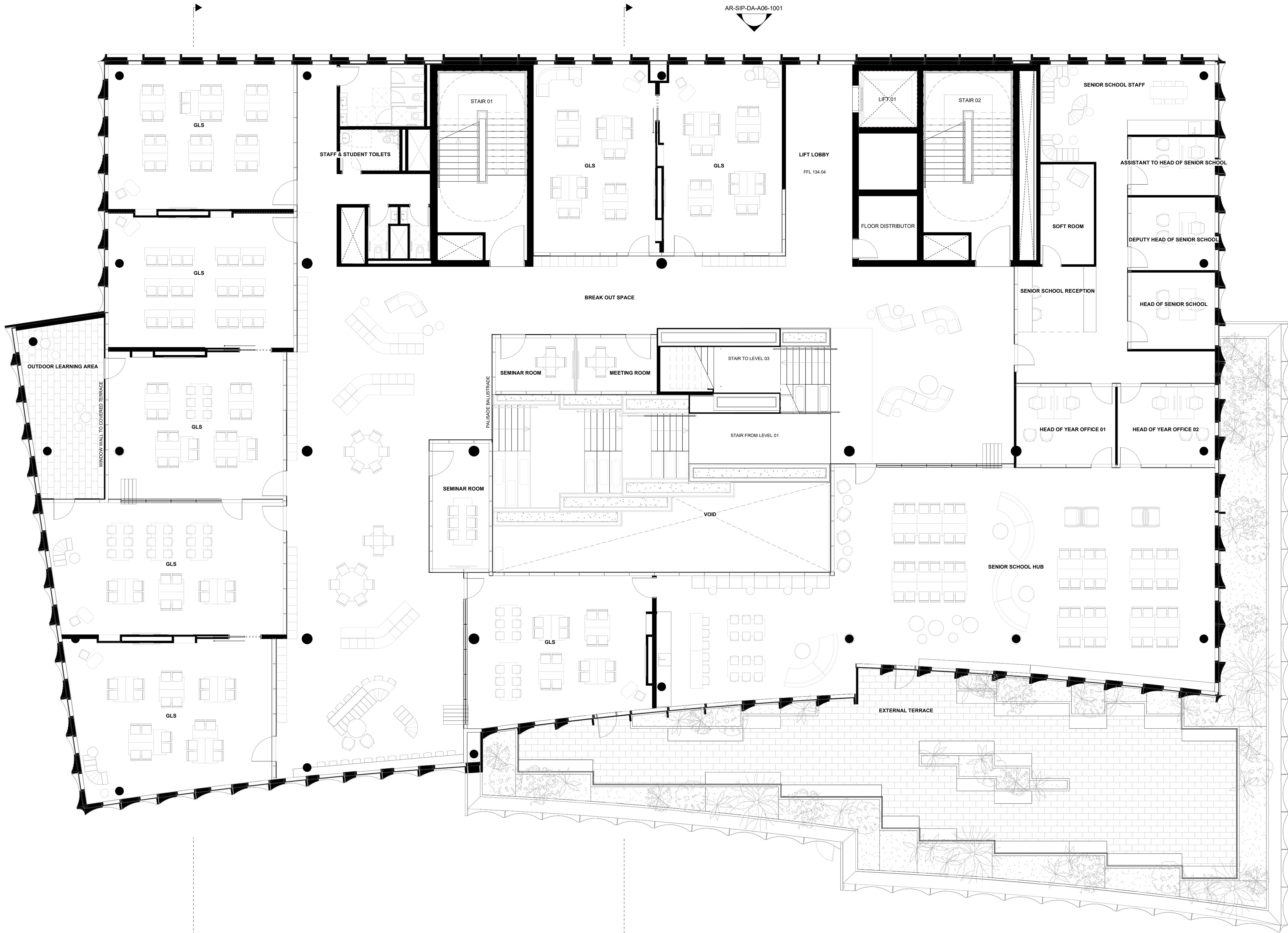
TRUE NORTH (MGA)
SCALE @ A1
1 : 100
STATUS
SSD-DA

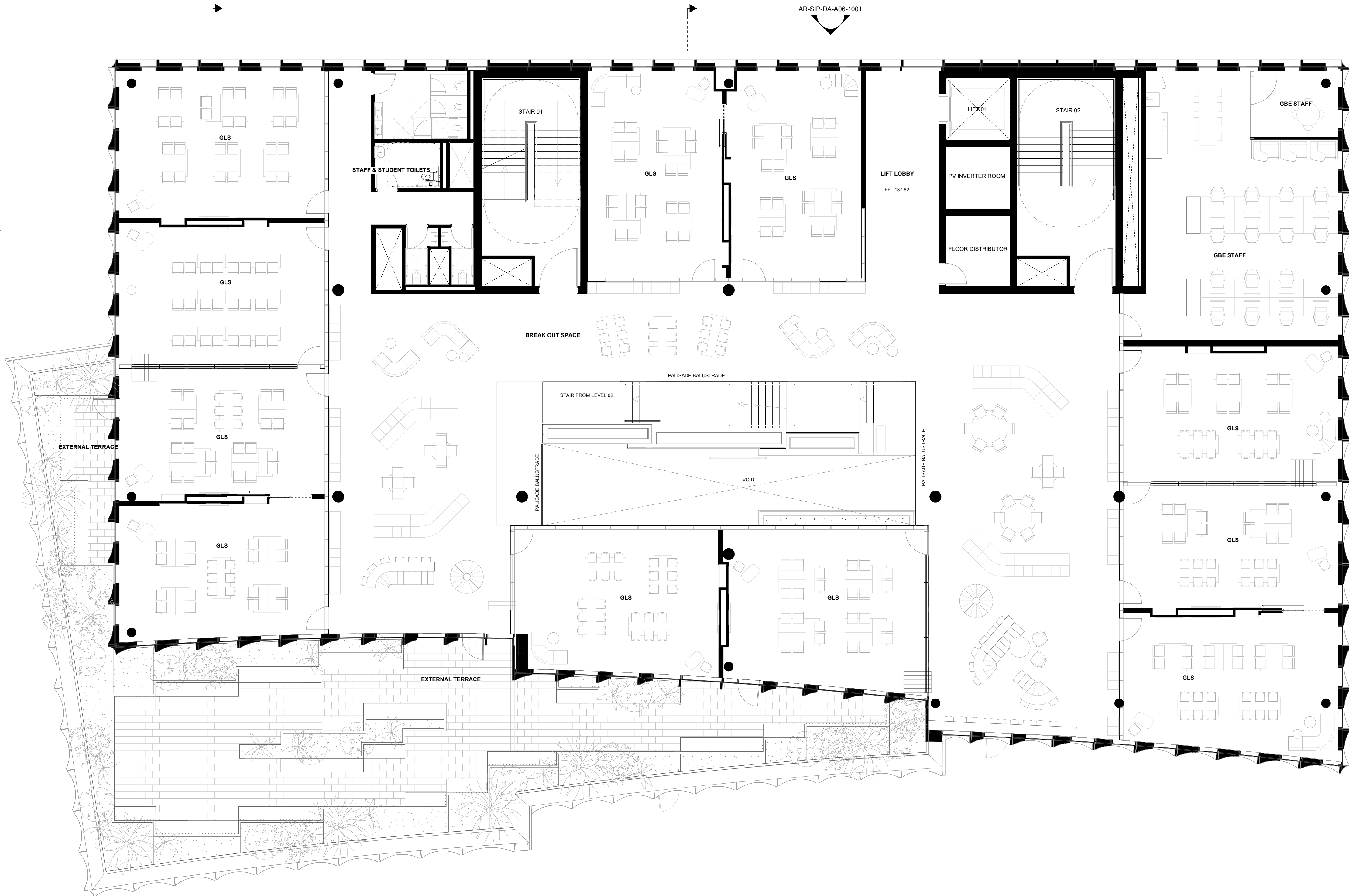
PROJECT NORTH

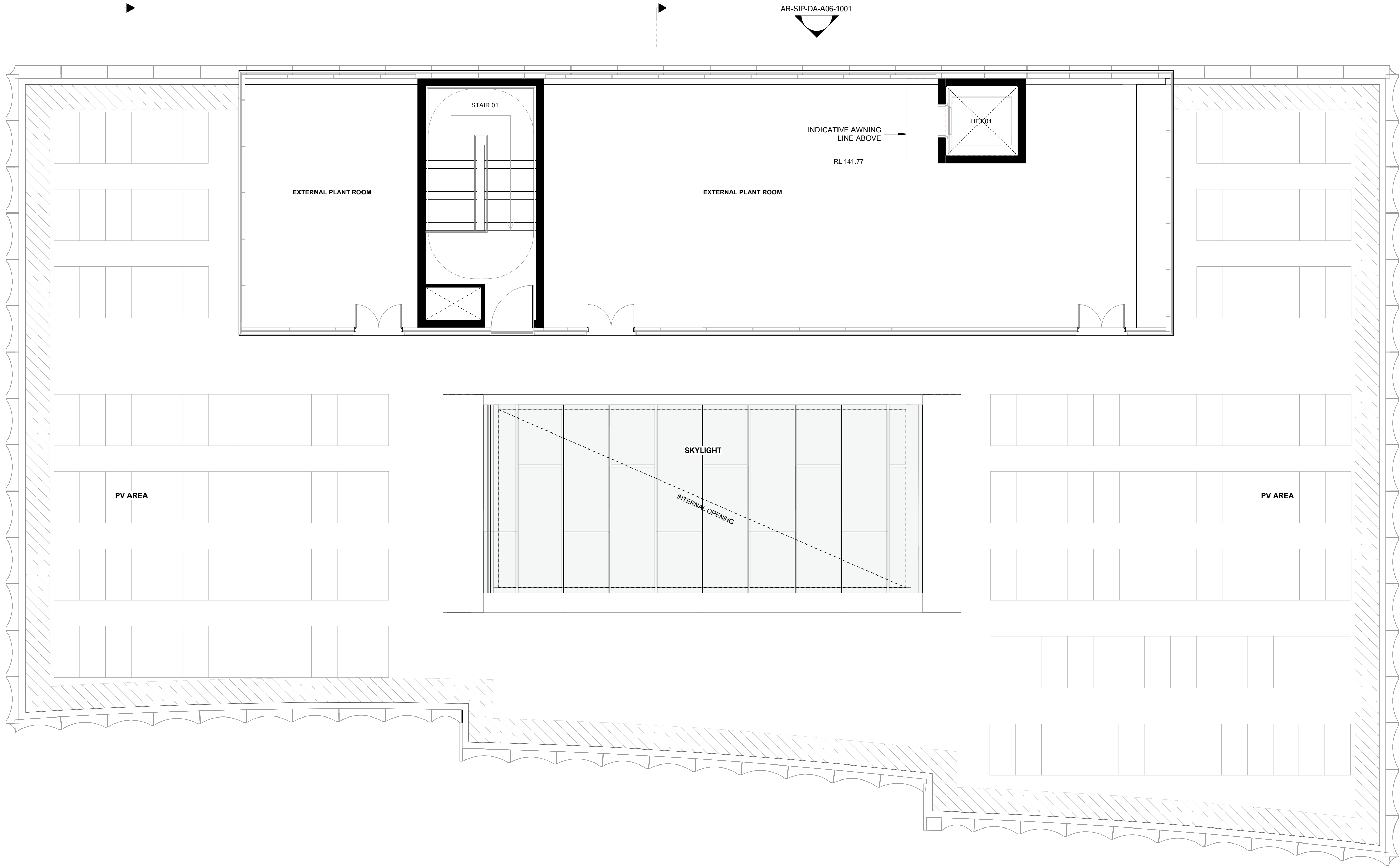
DRAWING
GA PLAN - GROUND FLOOR

DRAWING NUMBER
AR-SIP-DA-A02-1000
ISSUE
3









INTELLECTUAL PROPERTY

COPYRIGHT 3XN AUSTRALIA PTY LTD. UNLESS OTHERWISE AGREED IN WRITING, ALL RIGHTS TO THIS DOCUMENT ARE SUBJECT TO PAYMENT IN FULL OF ALL 3XN AUSTRALIA PTY LTD. CHARGES. THIS DOCUMENT MAY ONLY BE USED FOR THE EXPRESS PURPOSE AND PROJECT FOR WHICH IT HAS BEEN CREATED AND DELIVERED. AS NOTIFIED IN WRITING BY 3XN AUSTRALIA PTY LTD. AND THIS DOCUMENT MAY NOT BE OTHERWISE USED, OR COPIED, ANY UNAUTHORIZED USE OF THIS DOCUMENT IS AT THE USER'S SOLE RISK AND WITHOUT LIMITING 3XN AUSTRALIA PTY LTD'S RIGHTS THE USER RELEASES AND INDEMNIFIES 3XN AUSTRALIA PTY LTD FROM AND AGAINST ALL LOSS SO ARISING.

GENERAL NOTES

DRAWINGS SHOW ARCHITECTURAL DESIGN INTENT ONLY. THE DESIGN IS TO BE DEVELOPED IN COORDINATION WITH THE CONTRACTOR AND THE SUBCONTRACTOR'S INPUT TO ACHIEVE AND RETAIN THE DESIGN INTENT. ALL DRAWINGS MUST BE READ IN CONJUNCTION WITH THE REPORTS, SPECIFICATIONS AND SCHEDULES OF THE PROJECT TEAM. THE DESIGN IS TO BE VERIFIED IN ACCORDANCE WITH THE PROJECT PERFORMANCE REQUIREMENTS FOR THE PROJECT TEAM SPECIFICATIONS.

SHOP-DRAWING DETAILING MATERIAL / EQUIPMENT SELECTION AND SITE INVESTIGATION OF EXISTING STRUCTURES TO BE COORDINATED WITH THE CONTRACTOR AND SUBCONTRACTORS. ALL DIMENSIONS OF WORK, PRIOR TO OR CONCURRENTLY TO THE DEVELOPMENT OF SHOP-DRAWINGS. ALL DISCREPANCIES THAT MAY BE IDENTIFIED ARE TO BE REPORTED TO THE ARCHITECT AND HEAD CONTRACTOR FOR REVIEW.

REVISION

ISSUE	DATE	DESCRIPTION
1	03/02/2025	DRAFT SSD-DA
2	17/02/2025	FOR SSD-DA
3	13/03/2025	FOR SSD-DA

NOTES

FOR INFORMATION

DRAWING NOT TO BE USED FOR CONSTRUCTION

DRAWING TO BE PRINTED IN COLOUR

DRAWING KEY

CLIENT



PROJECT NAME
PYMBLE LADIES COLLEGE - SECONDARY INNOVATION PRECINCT
PROJECT ADDRESS
20 AVON ROAD, PYMBLE NSW 2073 AUSTRALIA
3XN PROJECT NUMBER
550053

TRUE NORTH (MGA)
PROJECT NORTH
SCALE @ A1
1 : 100
STATUS
SSD-DA

DRAWING

GA PLAN - ROOF LEVEL

DRAWING NUMBER
AR-SIP-DA-A02-1005
ISSUE
3

AR-SIP-DA-A06-1001

AR-SIP-DA-A07-1002

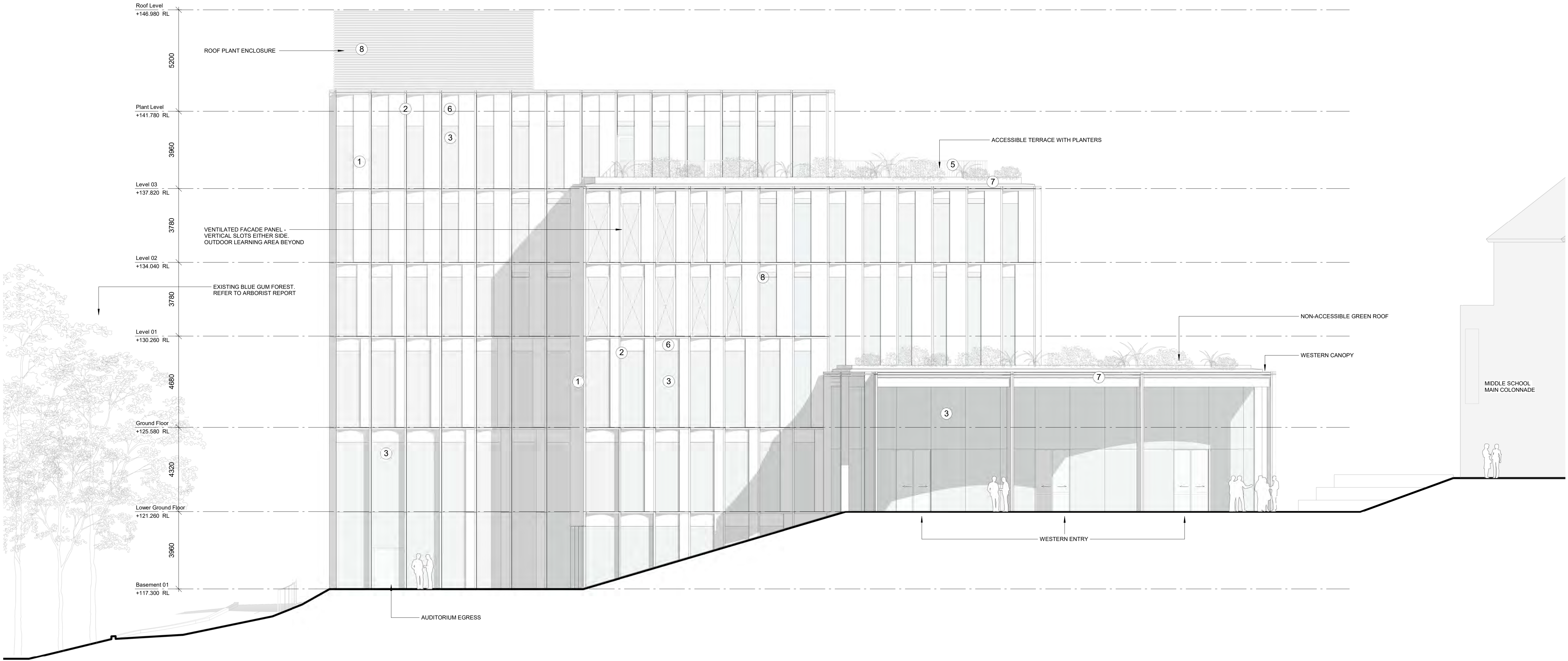
AR-SIP-DA-A06-1000

AR-SIP-DA-A06-1003

AR-SIP-DA-A07-1001

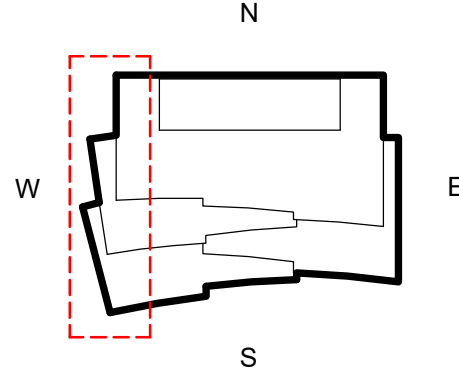
AR-SIP-DA-A07-1000

AR-SIP-DA-A06-1002



Materials

- ① Brick Cladding
- ② Aluminium Shroud - Warm Tone
- ③ Glazing
- ④ Glazed Spandrel Panel Shadowbox
- ⑤ Dark Metal Pallisade Balustrade
- ⑥ Vertical Cladding - Dark Tone
- ⑦ Metal Cladding - Warm Tone
- ⑧ Metal Louvers - Warm Tone



3XN

3XN AUSTRALIA PTY LTD
SUITE 1, 276 DICKSON STREET
BURRILL HILLS NSW 2010
AUSTRALIA
ABN 40 610 400 530
+61 2 9071 3000
WWW.3XN.COM

NEW ARCHITECTS
REGISTRATION BOARD /
NOMINATED ARCHITECTS
KIM HERFORTH NIELSEN - 9913
FRED HOLZ - 12704
DANIEL CRUDDACE - 11438

INTELLECTUAL PROPERTY
COPYRIGHT 3XN AUSTRALIA PTY LTD. UNLESS OTHERWISE AGREED IN WRITING,
ALL RIGHTS TO THIS DOCUMENT ARE SUBJECT TO PAYMENT IN FULL OF ALL 3XN
AUSTRALIA PTY LTD. CHARGES. THIS DOCUMENT MAY ONLY BE USED FOR THE
EXPRESS PURPOSE AND PROJECT FOR WHICH IT HAS BEEN CREATED AND
DELIVERED. AS NOTIFIED IN WRITING BY 3XN AUSTRALIA PTY LTD. AND THIS
DOCUMENT MAY NOT BE OTHERWISE USED, OR COPIED, ANY UNAUTHORIZED
USE OF THIS DOCUMENT IS AT THE USER'S SOLE RISK AND WITHOUT LIMITING 3XN
AUSTRALIA PTY LTD.'S RIGHTS THE USER RELEASES AND INDEMNIFIES 3XN
AUSTRALIA PTY LTD. FROM AND AGAINST ALL LOSS SO ARISING.

GENERAL NOTES
DRAWINGS SHOW ARCHITECTURAL DESIGN INTENT ONLY.
THE DESIGN IS TO BE DEVELOPED IN COORDINATION WITH
THE CONTRACTOR AND THE SUBCONTRACTOR'S INPUT TO
ACHIEVE AND RETAIN THE DESIGN INTENT. ALL DRAWINGS
MUST BE READ IN CONJUNCTION WITH THE REPORTS,
SPECIFICATIONS AND SCHEDULES OF THE PROJECT TEAM.
THE DESIGN IS TO BE VERIFIED IN ACCORDANCE WITH THE
PROJECT PERFORMANCE REQUIREMENTS FOR THE
PROJECT TEAM SPECIFICATIONS.

SHOP-DRAWING DETAILING MATERIAL / EQUIPMENT
SELECTION AND SITE INVESTIGATION OF EXISTING
STRUCTURES TO BE COORDINATED WITH THE
CONTRACTOR AND THE SUBCONTRACTOR'S INPUT TO
ACHIEVE AND RETAIN THE DESIGN INTENT. ALL DIMENSIONS
OF WORK, PRIOR TO OR CONCURRENTLY TO THE
DEVELOPMENT OF SHOP-DRAWINGS. ALL DISCREPANCIES
THAT MAY BE IDENTIFIED ARE TO BE REPORTED TO THE
ARCHITECT AND HEAD CONTRACTOR FOR REVIEW.

REVISION	DATE	DESCRIPTION
1	03/02/2025	DRAFT SSD-DA
2	17/02/2025	FOR SSD-DA
3	13/03/2025	FOR SSD-DA

NOTES

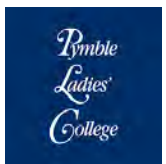
FOR INFORMATION

DRAWING NOT TO BE USED FOR CONSTRUCTION

DRAWING TO BE PRINTED IN COLOUR

DRAWING KEY

CLIENT



PROJECT NAME
PYMBLE LADIES COLLEGE - SECONDARY INNOVATION PRECINCT
PROJECT ADDRESS
20 AVON ROAD, PYMBLE NSW 2073 AUSTRALIA
3XN PROJECT NUMBER
550053

TRUE NORTH (MGA)
PROJECT NORTH
SCALE @ A1
1 : 100
STATUS
SSD-DA

DRAWING

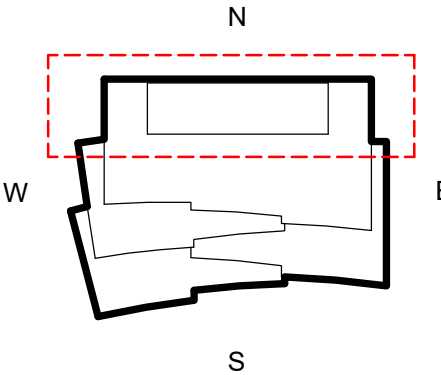
ELEVATION - WEST

DRAWING NUMBER
AR-SIP-DA-A06-1000
ISSUE
3



Materials

- ① Brick Cladding
- ② Aluminium Shroud - Warm Tone
- ③ Glazing
- ④ Glazed Spandrel Panel Shadowbox
- ⑤ Dark Metal Palliade Balustrade
- ⑥ Vertical Cladding - Dark Tone
- ⑦ Metal Cladding - Warm Tone
- ⑧ Metal Louvers - Warm Tone



3XN

3XN AUSTRALIA PTY LTD
SUITE 1, 276 DICKSON STREET
BURRILL HILLS NSW 2150
AUSTRALIA
ABN 40 610 400 530
+61 2 9071 3000
WWW.3XN.COM

NEW ARCHITECTS
REGISTRATION BOARD /
NOMINATED ARCHITECTS
KIM HERFORTH NIELSEN - 9913
FRED HOLZ - 12704
DANIEL CRUDDACE - 11438

INTELLECTUAL PROPERTY
COPYRIGHT 3XN AUSTRALIA PTY LTD. UNLESS OTHERWISE AGREED IN WRITING,
ALL RIGHTS TO THIS DOCUMENT ARE SUBJECT TO PAYMENT IN FULL OF ALL 3XN
AUSTRALIA PTY LTD. CHARGES. THIS DOCUMENT MAY ONLY BE USED FOR THE
EXPRESS PURPOSE AND PROJECT FOR WHICH IT HAS BEEN CREATED AND
DELIVERED. AS NOTIFIED IN WRITING BY 3XN AUSTRALIA PTY LTD. AND THIS
AUSTRALIA PTY LTD. RIGHTS THE USER RELEASES AND INDEMNIFIES 3XN
AUSTRALIA PTY LTD FROM AND AGAINST ALL LOSS SO ARISING.

GENERAL NOTES
DRAWINGS SHOW ARCHITECTURAL DESIGN INTENT ONLY.
THE DESIGN IS TO BE DEVELOPED IN COORDINATION WITH
THE CONTRACTOR AND THE SUBCONTRACTOR'S INPUT TO
ACHIEVE AND RETAIN THE DESIGN INTENT. ALL DRAWINGS
SPECIFICATIONS AND SCHEDULES OF THE PROJECT TEAM
THE DESIGN IS TO BE VERIFIED IN ACCORDANCE WITH THE
PROJECT PERFORMANCE REQUIREMENTS FOR THE
ARCHITECT AND HEAD CONTRACTOR FOR REVIEW.

SHOP-DRAWING DETAILING MATERIAL / EQUIPMENT
SELECTION AND SITE INVESTIGATION OF EXISTING
STRUCTURES TO BE COORDINATED WITH THE
CONTRACTOR AND SUBCONTRACTORS. ALL DIMENSIONS
OF WORK, PRIOR TO OR CONCURRENTLY TO THE
DEVELOPMENT OF SHOP-DRAWINGS. ALL DISCREPANCIES
THAT MAY BE IDENTIFIED ARE TO BE REPORTED TO THE
ARCHITECT AND HEAD CONTRACTOR FOR REVIEW.

REVISION	DATE	DESCRIPTION
1	03/02/2025	DRAFT SSD-DA
2	17/02/2025	FOR SSD-DA
3	13/03/2025	FOR SSD-DA

NOTES

FOR INFORMATION

DRAWING NOT TO BE USED FOR CONSTRUCTION
DRAWING TO BE PRINTED IN COLOUR

DRAWING KEY

CLIENT



PROJECT NAME
PYMBLE LADIES COLLEGE - SECONDARY INNOVATION PRECINCT
PROJECT ADDRESS
20 AVON ROAD, PYMBLE NSW 2073 AUSTRALIA
3XN PROJECT NUMBER
550053

TRUE NORTH (MGA)
PROJECT NORTH
SCALE @ A1
1 : 100
STATUS
SSD-DA

DRAWING
ELEVATION - NORTH
DRAWING NUMBER
AR-SIP-DA-A06-1001
ISSUE
3



3XN

3XN AUSTRALIA PTY LTD
SUITE 1, 278 DICKSON STREET
BURRILL HILLS NSW 2010
AUSTRALIA
ABN 40 610 404 530
+61 2 9071 3000
WWW.3XN.COM

NEW ARCHITECTS
REGISTRATION BOARD /
NOMINATED ARCHITECTS
KIM HERFORTH NIELSEN - 9513
FRED HOLZ - 12704
DANIEL CRUDDACE - 11438

INTELLECTUAL PROPERTY
COPYRIGHT 3XN AUSTRALIA PTY LTD. UNLESS OTHERWISE AGREED IN WRITING,
ALL RIGHTS TO THIS DOCUMENT ARE SUBJECT TO PAYMENT IN FULL OF ALL 3XN
AUSTRALIA PTY LTD. CHARGES. THIS DOCUMENT MAY ONLY BE USED FOR THE
EXPRESS PURPOSE AND PROJECT FOR WHICH IT HAS BEEN CREATED AND
DELIVERED. AS NOTIFIED IN WRITING BY 3XN AUSTRALIA PTY LTD. AND THIS
DOCUMENT MAY NOT BE OTHERWISE USED, OR COPIED, ANY UNAUTHORIZED
USE OF THIS DOCUMENT IS AT THE USER'S SOLE RISK AND WITHOUT LIMITING 3XN
AUSTRALIA PTY LTD'S RIGHTS THE USER RELEASES AND INDEMNIFIES 3XN
AUSTRALIA PTY LTD FROM AND AGAINST ALL LOSS SO ARISING.

GENERAL NOTES
DRAWINGS SHOW ARCHITECTURAL DESIGN INTENT ONLY.
THE DESIGN IS TO BE DEVELOPED IN COORDINATION WITH
THE CONTRACTOR AND THE SUBCONTRACTOR'S INPUT TO
ACHIEVE AND RETAIN THE DESIGN INTENT. ALL DRAWINGS
MUST BE READ IN CONJUNCTION WITH THE REPORTS,
SPECIFICATIONS AND SCHEDULES OF THE PROJECT TEAM.
THE DESIGN IS TO BE VERIFIED IN ACCORDANCE WITH THE
PROJECT PERFORMANCE REQUIREMENTS FOR THE
PROJECT TEAM SPECIFICATIONS.

SHOP-DRAWING DETAILING MATERIAL / EQUIPMENT
SELECTION AND SITE INVESTIGATION OF EXISTING
STRUCTURES TO BE COORDINATED WITH THE
CONTRACTOR AND SUBCONTRACTORS. ALL DIMENSIONS
OF WORK, PRIOR TO OR CONCURRENTLY TO THE
DEVELOPMENT OF SHOP-DRAWINGS. ALL DISCREPANCIES
THAT MAY BE IDENTIFIED ARE TO BE REPORTED TO THE
ARCHITECT AND HEAD CONTRACTOR FOR REVIEW.

REVISION	DATE	DESCRIPTION
1	03/02/2025	DRAFT SSD-DA
2	17/02/2025	FOR SSD-DA
3	13/03/2025	FOR SSD-DA

NOTES

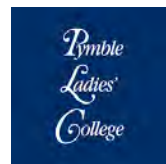
FOR INFORMATION

DRAWING NOT TO BE USED FOR CONSTRUCTION

DRAWING TO BE PRINTED IN COLOUR

DRAWING KEY

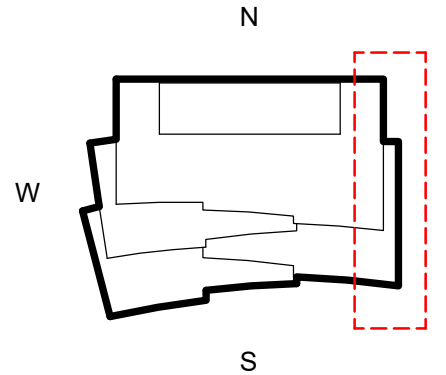
CLIENT



PROJECT NAME
PYMBLE LADIES' COLLEGE - SECONDARY INNOVATION PRECINCT
PROJECT ADDRESS
20 AVON ROAD, PYMBLE NSW 2073 AUSTRALIA
3XN PROJECT NUMBER
550053

Materials

- ① Brick Cladding
- ② Aluminium Shroud - Warm Tone
- ③ Glazing
- ④ Glazed Spandrel Panel Shadowbox
- ⑤ Dark Metal Pallisade Balustrade
- ⑥ Vertical Cladding - Dark Tone
- ⑦ Metal Cladding - Warm Tone
- ⑧ Metal Louvers - Warm Tone



TRUE NORTH (MGA)

PROJECT NORTH

DRAWING

ELEVATION - EAST

SCALE @ A1

STATUS

SSD-DA

DRAWING NUMBER

ISSUE

AR-SIP-DA-A06-1003

3